

American Estates Wines

introduces

New World-style wines


from

Spain

***A combination of traditional winemaking
With a new generation of winemakers
+ Capital Investment
+ More innovation, winemaking freedom
= Exciting new wines being produced.***

***NEW WORLD-STYLE WINES
FROM THE OLD WORLD***



The Winemaking Regions of Spain



Jumilla

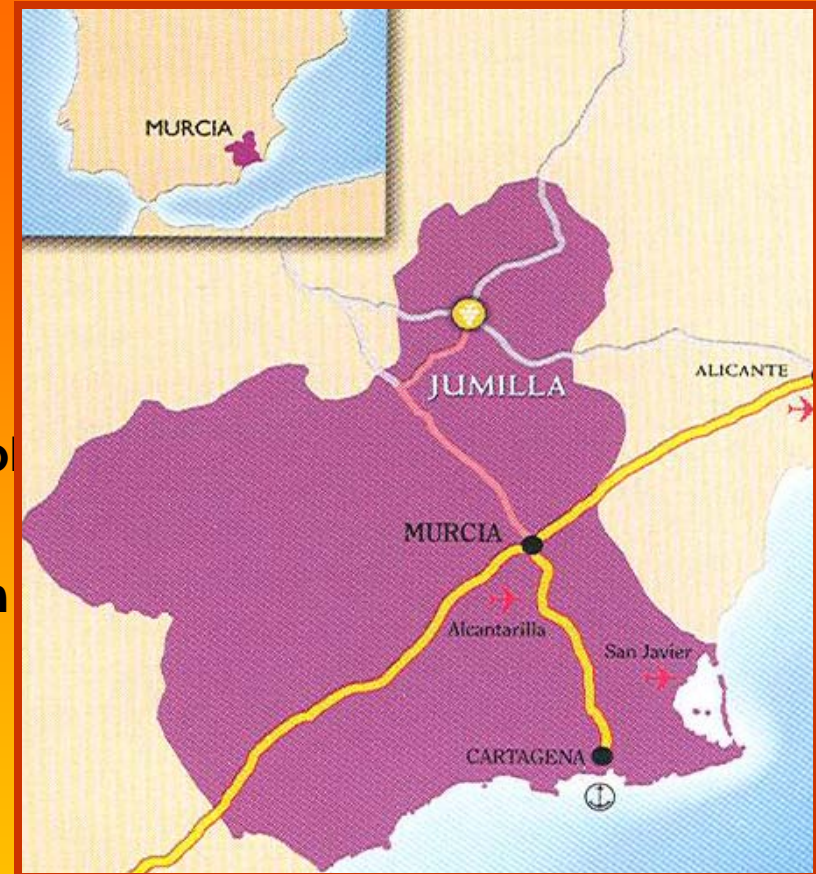
Midway between the provinces of Murcia and Albacete, this DO spreads over a large region in the SE of Spain.

Jumilla is a region that provides low quantity levels but high quality levels. It has low rainfall and altitude and is known to produce full-bodied wines; they are also dry and earthy, with jammy notes.

The climate is Continental – Mediterranean having low rainfall concentrated in the spring and fall. It is characterized by cold winters and hot summers.

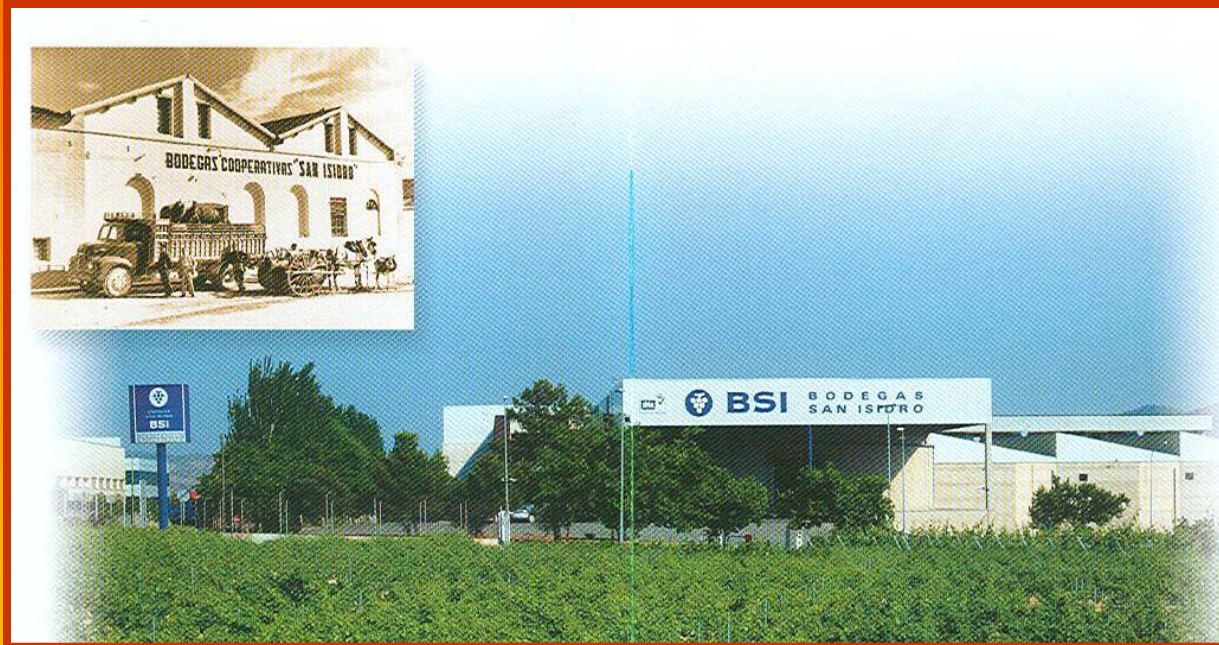
The soil is limestone and poor in organic matter, with good retention of water.

The Monastrell grape, murvièdre in France, can endure the frosty winters and dry summers in limy soil. It is well suited to a dry climate with high temperatures.

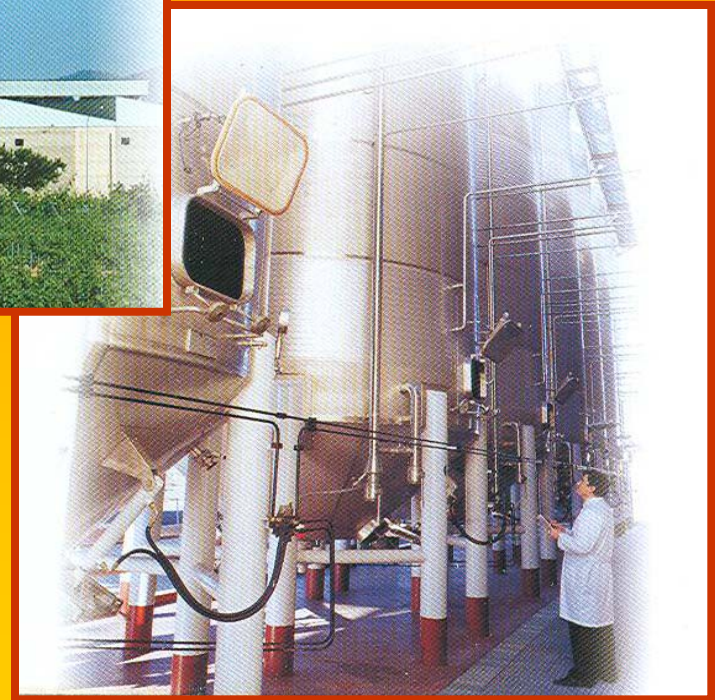


Bodegas San Isidro

Gemina Monastrell 2007



Established in 1934, BSI now has a state of the art winery utilizing the latest winemaking technology creating wines of the highest quality. Stored in the Gemina hall in American and French oak barrels, the wines enjoy optimum humidity and temperature-controlled aging.





89+ pts

The 2007 Gemina Monastrell is dark ruby-colored with a bouquet of cedar, mineral, plum, and blueberry. Forward and sweet on the palate, the wine has some structure, ripe blue fruit flavors, and a lengthy, pure finish. Enjoy this tasty wine through 2014. It is a **superb value**.



La Mancha

La Mancha is the largest wine-growing region in Spain and in the world.

Climate: Extreme continental, with temperatures ranging between 104/113°F in summer and 10/14°F in winter. Rather low rainfall, with an average of about 14.75 inches per year.

Soil: The terrain is flat and the vineyards are situated at an altitude of about 3,000 feet above sea level. The soil is generally sandy, limey and clayey.

The grape ripens earlier.

Wines with a higher alcohol content and lower acidity.



Campos Reales



Campos Reales is one of the largest producers in the DO La Mancha retaining from tradition that which we know should not be changed: hand harvesting, traditional pruning, the importance of indigenous grape varieties, and aging in quality oak barrels. Combined with all of this, however, is state-of-the-art technology which enables us to carry out the age-old processes more efficiently and with greater control. We invest our resources in order to gain maximum benefit from these cutting-edge advances, incorporating the most up-to-date technology in the vineyard and winemaking processes.

Campos Reales



The calcaceous (lime) clay soils, with their surface sand and shingle deposits, are ideal for maximum water retention, an essential element in an area of scarce rainfall.

Extremes of cold in winter and heat in summer: climactic conditions that are ideal for producing excellent quality grapes. A wide variety of grapes can be found in our vineyards. Amongst the reds are Tempranillo, Garnacha, Tintorera, Cabernet, Syrah, Manstrell, Moravia, Merlot, and Bobal. And the whites: Airén, Macabeo, Chardonnay, and Sauvignon Blanc.



GLADIUM TEMPRANILLO 2006

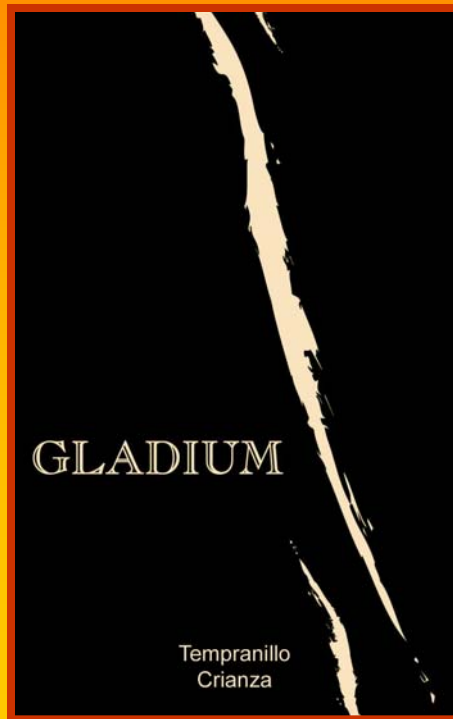
Through a careful selection from our own vines, we obtain this young, cherry and violet colored wine. Bright, well-colored with red-fruit aromas of strawberry and blackberry. Delicious, fresh and fleshy with finely balanced acidity.

GLADIUM CRIANZA 2006

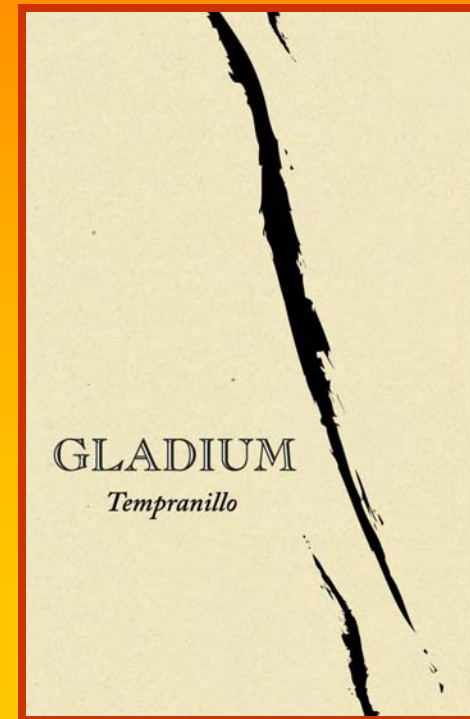


Intense ruby color with vanilla and forest-fruits aromas, the wood standing out. Easy drinking with a pleasing and long oaked finish.

90 pts

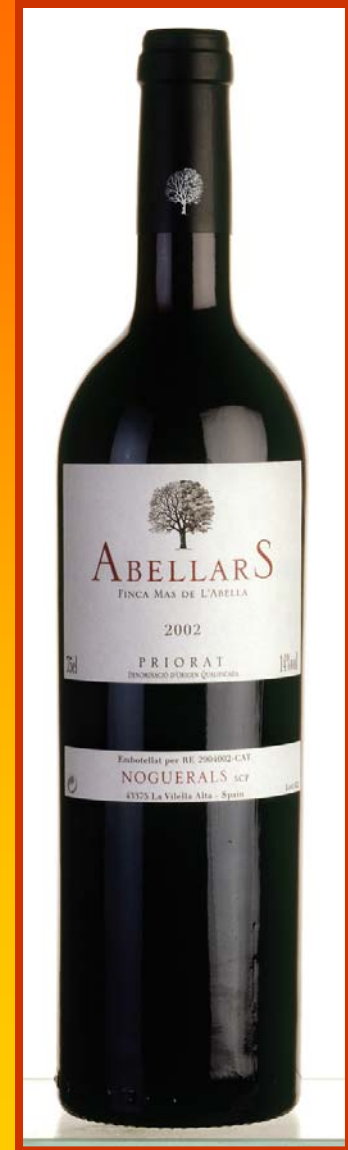


87 pts



NOUGERALS

The Alzamore family is based in Montsant where they have owned vineyard for several generations. In 1999 they added a 4-hectare Priorat vineyard to their holdings.





ABELLARS PRIORAT

96

The 2004 Abellars Priorat is a blend of 50% Garnacha, 25% Carinena, 15% Cabernet Sauvignon, and 10% Syrah. A glass-staining inky purple, this is a super-fragrant wine with elements of mineral, truffle, blueberry, black cherry, and black raspberry. The wine has well-concealed silky tannin, outstanding depth and richness, and manages to combine elegance with all of its power. Rich enough to be enjoyed now, it has the stuffing to evolve for 4-6 years and should drink well through 2025.

A selection from

American Estates Wines, Inc

Coming attractions



90



The 2007 El Convento Priorat is composed of 70% Garnacha and 30% Carinena. Aromas of slate/mineral, damp earth, black cherry, and blackberry are quite fragrant. Full-bodied and sweetly-fruited on the palate, it has plenty of depth, layers of flavor, and excellent length. Give it 1-2 years of cellaring and drink it through 2019. *It is a great value in Priorat.*

**“Wine is the most
civilized thing in
the world.”**

- *Ernest Hemingway*

American Estates Wines

- **American Estates Wines (AEW) began operating in 1985 as a selector and marketer of single vineyard and small estate California wineries. It introduced many of these brands to Metro New York, and later to the surrounding Northeastern states. Over the years it has established a working relationship with many key accounts in this region.**
- **In 1986, AEW began importing wine from New Zealand and Australia and in 2007, Spain was added. For New Zealand wines, that makes it the oldest company continuously importing into the USA. Having its pick of the best New Zealand wines over the years, AEW now has a stellar portfolio of that country's icon brands.**
- **The Australian wines are equally interesting. They range from one of the Barossa's top rated Shiraz - Turkey Flat, to arguably the most famous name in the Tasmanian wine industry, Pirie Tasmania.**
- **And the newest additions to the portfolio, Spanish wines, are brands that offer indigenous grapes from old vineyards made in modern wineries. Many have already received accolades from the Wine Advocate.**
- **The common point among all these wines is commitment to excellence in the vineyard and in the winery. AEW, in turn, is committed to delivering the highest quality brand management through its distributor network in selected markets nationwide.**

